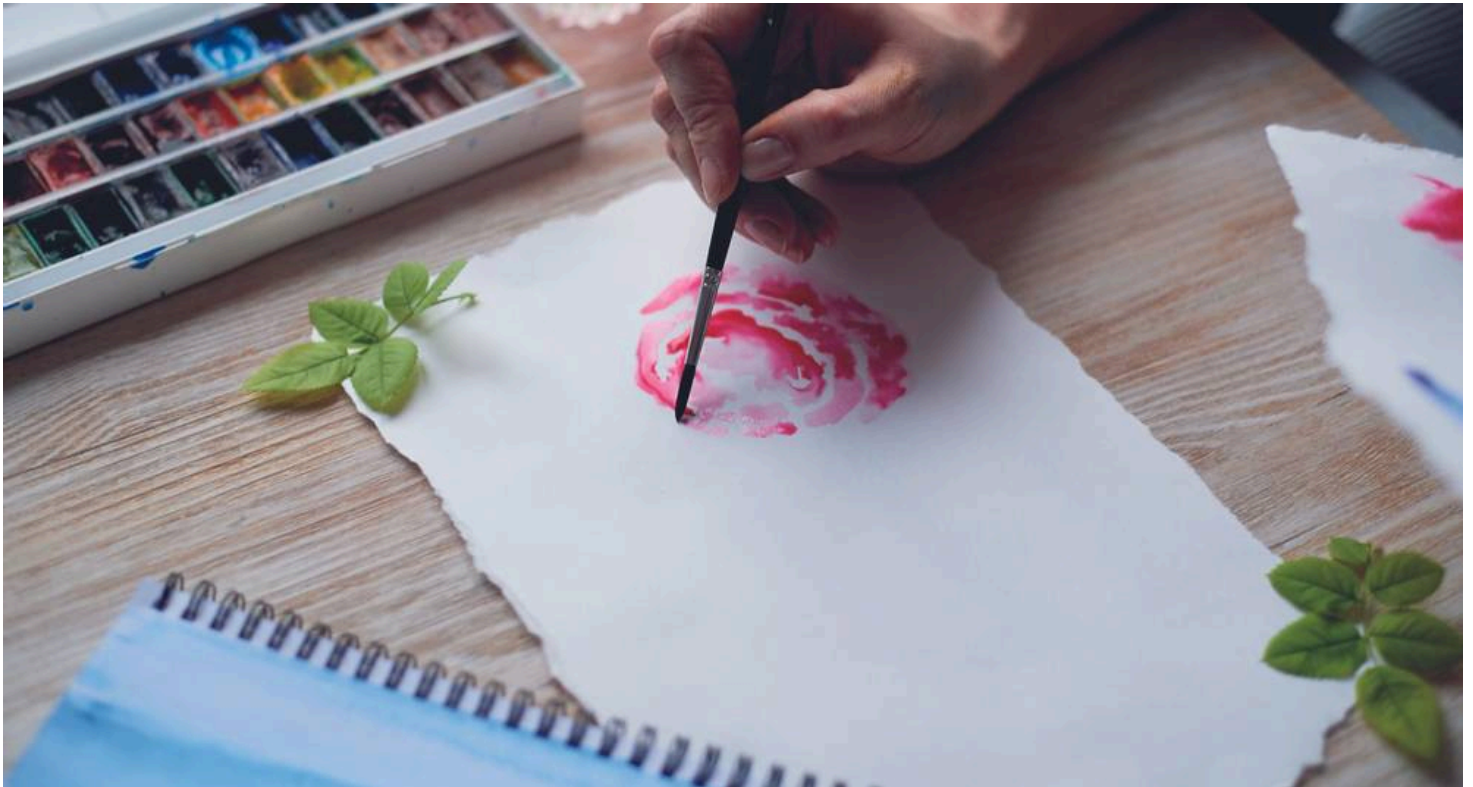


3 Night Introduction to Watercolours in the South Downs

Tour Style: Small group holidays

Destinations: South Downs, United Kingdom & England

Trip code: AWPBA-3



HOLIDAY OVERVIEW

With the countryside or coastline as an inspiring backdrop, this holiday caters for all ability levels; from absolute beginners to more experienced artists hoping to shake up their style. Led by expert tutors in groups of no more than 15, you'll learn how to get comfortable using watercolour paints - and try out new ideas. You'll also have ample time to practise in peaceful surroundings.

WHAT'S INCLUDED

- Expert tuition
- Loan of wooden A3 art boards
- Comfortable en-suite accommodation in our country house
- Cream tea on arrival day
- Cooked or continental breakfast every morning
- Daily packed lunches
- Three-course evening meals, plus tea & coffee
- Easy-to-follow routes, maps, and information available in our Discovery Point if you want to explore

independently

HOLIDAY HIGHLIGHTS

- Learning how to work with watercolour paints
- Taking advice and guidance from an expert tutor
- Expressing yourself through art
- Gaining confidence by using various techniques
- A more personalised experience thanks to small group sizes (maximum 15 people)

ITINERARY

Day 1: Arrival Day

Check-in at the hotel is available from 4pm. Enjoy a complimentary cream tea on arrival.

Day 2: Brush Control & Colour Mixing

We'll start with the basics on our first day. Learn about the materials involved in watercolour painting and how to use them. We will talk through the various elements of the watercolour artist's kit and build a solid foundation on which to develop our skills.

Day 3: Wet-on-Wet Blending Techniques

Following on from yesterday's introduction, we'll experiment with traditional watercolour techniques, with a particular focus on wet-on-wet painting. Creating paintings in this way means we can take full advantage of the medium to produce soft yet complex effects in our work.

Day 4: Departure Day

Enjoy a leisurely breakfast before making your way home.

ACCOMMODATION

Abingworth Hall

Country living just got cosier at this former farmhouse. Abingworth Hall is just a skip away from the village of Thakeham at the foot of the South Downs – a landscape of ancient woodland, hidden valleys, chalky cliffs, and high-backed hills so deserving of its national park status finally bestowed in 2010. While the views from the doorstep are as wow-worthy as you'd expect, the walking opportunities around the sightseeing greats such as Devil's Dyke, Seven Sisters Country Park, Kingley Vale, Parham House, and the Clayton Windmills (known locally as Jack and Jill) are equally standout. You'll also be within easy driving distance of several historic towns and cities, most fabulously Arundel, Chichester, and Brighton.

Country House Accommodation

Rooms

Designed with your comfort in mind, Abingworth Hall has 27 well-appointed guest rooms available in two

categories: Classic and Premium.

Classic Rooms are comfortable en-suite guest rooms, ideal for a peaceful night's sleep. Amenities include free Wi-Fi, tea and coffee-making facilities, toiletries (hand wash, shampoo, and shower gel), and a TV.

Premium Rooms are more spacious en-suite guest rooms*. Amenities include free Wi-Fi, tea and coffee-making facilities, toiletries (hand wash, shampoo, body lotion, shower gel), and a 32-inch TV. Extras include bathrobes, slippers.

We love: The Premium Rooms for views of the impossibly pretty surroundings.

The **Choose Your Room** service is available at our UK country houses, allowing you the option of choosing and confirming a specific room for an extra charge of £30 per room. This is subject to availability. Upgrade supplements apply.

Check in & check out

You are welcome to check in from **4:00pm at the earliest**. On arrival, you'll enjoy a complimentary cream tea and get to meet your fellow guests, our HF Holidays Leaders, and the rest of the friendly team.

On the day of departure, we kindly ask all guests to check out by **10:00am**. You'll be asked to settle your bill prior to leaving. You may, of course, make a charitable donation to our HF Holidays Pathways Fund if you wish. Please note that we only accept card payments.

Room supplements

Premium single	Premium double/twin	Choose your room
£20 pppn	£20 pppn	£30 per room

*Views and layout reflect each properties unique character and location

*Please note, pool opening hours are: 07:00am – 09:00am and 16:00pm – 18:30pm

About Your Stay

A warm welcome

We want you to feel comfortable from the moment you arrive. You'll find a welcome pack in your room with guest registration forms, menus, order forms for dinners and picnic lunches, the Wi-Fi password, and the front door code. Our houses are locked at night, so we recommend noting the Duty Manager's number on arrival in case of an emergency (or getting locked out).

Evening entertainment

While evening entertainment varies from house to house, the HF Holidays Big Pub Quiz held after dinner on Wednesdays is a weekly staple. Your HF Holidays Leader may be around for tips on guided and self-guided walking routes as well as visit-worthy local attractions.

Walks talks

Our HF Holidays Leaders host guided walking information briefings before dinner on arrival days. This is followed by a group Walks Talk for information on the following day's walking delights (held before dinner every evening). Self-guided walking guests are, of course, welcome.

The walking day

Prior to setting off on walks, your HF Holidays Leader will run you through a short safety briefing. There's also an up-to-date weather forecast on display at the house to ensure you have appropriate clothing and footwear. If you choose to do your own walks or are on a self-guided walking holiday, we ask that you please complete an Independent Walker Card each day. These can be found near the Discovery Point in the house.

Food & Drink

Led by experienced chefs, we serve a wide range of dishes made with fresh and seasonal ingredients. We always aim to source the best produce available and use home-grown herbs and vegetables from our own gardens whenever possible. Additionally, we have a licensed bar with beers, soft drinks, and a superb selection of spirits. Full-board comes as standard and includes a cream tea on arrival and a hearty breakfast on departure day.

HF Holidays understands the importance of managing allergens effectively to ensure food is safe for guests with food allergies. Whilst we are always able to confidently inform guests which allergens are present in our ingredients and dishes, we are unable to guarantee absolute freedom from the 14 main allergens in our kitchens. Vegetarian and vegan menu choices are available. If you have allergies, food intolerances, or any special dietary requirements, please inform our reservation team at the time of booking.

Accessibility

For accessibility and assistance information, please contact our expert team on [020 3974 8865](tel:02039748865) or view the accessibility information online for [Abingworth Hall](#)

TRAVEL DETAILS

Address

Abingworth Hall
Storrington Road
Thakeham
West Sussex RH20 3EF

Tel: [+44 \(0\)1798 813636](tel:+44(0)1798813636)

By Train

The nearest station is Pulborough.

Pulborough station has a short platform, so you'll need to check the departure boards for which carriage to sit in.

National Rail have up-to-date routes and train times.

By Taxi

The six-mile journey from Pulborough railway station takes about 15 minutes.

It's best to avoid arriving at Pulborough station between 2:50pm and 3:20pm as there may not be any taxis available due to school pick-ups.

For pricing, please contact the taxi company directly.

MJ Cars

You can pre-book a taxi from with MJ Cars*. We recommend booking your taxi at least seven days in advance by contacting:

Tel: [+44 \(0\)1903 745414](tel:+44(0)1903745414)

Email: mjcars@btconnect.com

A return journey can be arranged on your behalf by the HF Holidays House Manager at Abingworth Hall.

*MJ Cars is not owned or managed by HF Holidays.

Sue's Private Hire

You can pre-book a taxi with Sue's Private Hire* by phone, text or email. Please pre-book asap as there are no taxis based at Pulborough Station. Your journey will be mostly with a lady driver and an electric car.

Tel: [+44 \(0\)1798 874848](tel:+44(0)1798874848) / [+44 \(0\)7918 137066](tel:+44(0)7918137066)

Email:- sueph520@yahoo.com

*Sue's Private Hire is not owned or managed by HF Holidays and prices are subject to change

By Car

From the M25

Take either the A24 or the M23 and then the A264 towards Horsham. At the Great Daux roundabout go south on the A24 towards Worthing. Go straight over two roundabouts and then at the traffic lights turn right onto the A272 to Billingshurst and Petersfield. After three miles turn left onto the B2139. Abingworth Hall is approximately four miles from this junction on the left hand side (go past Abingworth Meadows and Thakeham Pre-School).

From the M27

Continue onto the A27 around Chichester. At the second roundabout take the first exit on to the A29, then the second exit on to the B2139 to Storrington. At the mini roundabout, take the second exit onto the A283. Continue through Storrington then turn onto the B2139 towards Thakeham. Continue straight ahead at the traffic lights, and then take the first exit at the mini roundabout then the first exit. Continue down this road until you reach Abingworth Hall on the right.

By Air

The nearest airport is Gatwick Airport.

The easiest way to get from Gatwick Airport to Abingworth Hall is by taxi, a 29-mile journey taking around 40 minutes.

LOCAL AREA

Whether you're enjoying a guided or self-guided walking holiday, there's always the opportunity to linger for longer. Here's our pick of the very best things to see and do within easy travelling distance of Abingworth Hall.

Arundel

Just a 30-minute drive away, this picturesque West Sussex market town is most famous for two landmarks: Arundel Castle and Arundel Cathedral. A short way from the town centre is the open-air Amberley Museum with over 40 exhibits spread across its 36 acres.

Arundel Wetlands Centre

A 30-minute drive away, this 60-acre nature reserve run by the Wildfowl and Wetlands Trust provides a protected habitat for swans, geese, ducks, and other beautiful wetland birds. Boat safaris are available, weather permitting.

Bignor Roman Villa

Home to some of the best-preserved Roman mosaics in the UK, this courtyard villa turned visitor attraction is the heart of the South Downs National Park. The land is still farmed by the family of George Tupper, the farmer who discovered the site whilst ploughing in 1811.

Pulborough Brooks Nature Reserve

Just four miles away, this nature-rich area is set in the sheltered Arun Valley within the South Downs National Park. Expect a great variety of habitats (wetlands, heathland, woodland) as well as some wonderful wildlife viewing. The visitor centre is open year-round.

Uppark House & Garden

A 50-minute drive away, this 17th century stately National Trust property set within intimate gardens and woodland overlooking the South Downs was lovingly restored following a fire in 1989. Interiors include Grand Tour paintings and a very impressive dolls' house.

Parham House & Gardens

Set at the foot of the South Downs, this E-shaped Elizabethan mansion was built in 1557. Highlights include the deer park, mature trees, four-acre walled garden with herbaceous borders, and seven acres of landscaped pleasure grounds.

Fishbourne Roman Palace

Just a couple of miles outside Chichester, Britain's largest residential Roman building was one of the great archaeological discoveries of the 1960s. The palace is most famous for its collection of mosaics, many of which were identified early in the excavation campaign.

Petworth House & Park

Managed by the National Trust, this 17th century mansion set in a 700-acre deer park is a 30-minute drive away. The majestic grounds were designed by Lancelot 'Capability' Brown and include the Ionic Rotunda erected in about 1765.

Weald & Downland Living Museum

Having shot to fame as the filming location of the BBC's *The Repair Shop*, this open-air museum brings the history of Sussex to life with over 50 historic buildings. One highlight is the working watermill dating from the early 17th century.

Bluebell Railway

Running across 11 miles from Sheffield Park to East Grinstead in Sussex, stopping at Horsted Keynes and Kingscote, the UK's first preserved heritage line is ideal for those who like the romantic thrill of steam travel. Special events are hosted throughout the year.

USEFUL HOLIDAY INFORMATION

Essential Information

For introductory art holidays, all guests will require the following materials and tools, to be purchased before the start of your holiday. The listed items should be available from all good art supply shops, and we recommend that you try to purchase the best quality that you can afford. Well-known brands, such as Daler Rowney or Winsor & Newton have 'student' quality ranges which are ideal for our exercises.

Paints & Pencils

Watercolour paints in tubes or dry pan sets, in the following colours:

- Ultramarine Blue, Cobalt Blue & Cerulean Blue
- Cadmium Red & Alizarin Crimson
- Lemon Yellow, Yellow Ochre & Cadmium Yellow
- Sap Green
- Burnt Umber & Burnt Sienna
- Payne's Grey

Plus:

- Designers Permanent White Gouache in a tube
- 2B & 4B pencils
- Black/Sepia-coloured fibre-tipped drawing pens (waterproof ink, in fine and medium thickness)

Surfaces

- 10" x 14" 300gm watercolour book or pre-glued pad (cold pressed/not, surfaced), 10-12 sheets
- A4 Cartridge Sketch Pad

Tools

- Watercolour brushes: No. 10, No. 6 & No. 3
- Small Rigger brush
- Pencil eraser
- Mixing palette (can be a white dinner plate!)
- Small craft knife or pencil sharpener
- Water pot
- Kitchen roll x 1
- Bulldog clips x 6

TRIP NOTE VALIDITY

These Trip Notes are valid based on the date printed at the bottom of the page. They will occasionally be updated post booking and pre-departure. We will send you the latest trip notes prior to departure through a link in your pre departure documents or we can send you a copy in the post if preferred.

In booking this trip you should be confident in your ability to participate in all activities described in these Trip Notes. If you have any doubt about your suitability you should call HF Holidays and ask to speak to one of the team about this itinerary.

The information in these Trip Notes is given in good faith. Where differences exist between the Trip Notes and our current brochure, the Trip Notes supersede the brochure. All holidays can be subject to unexpected changes; so please be prepared to be flexible where necessary. At times, it may not be possible to follow the itinerary as planned due to weather conditions, political, physical or other factors. In these circumstances we will make the best possible alternative arrangements to maintain the integrity of the original itinerary.

Document produced: 21-05-2025

