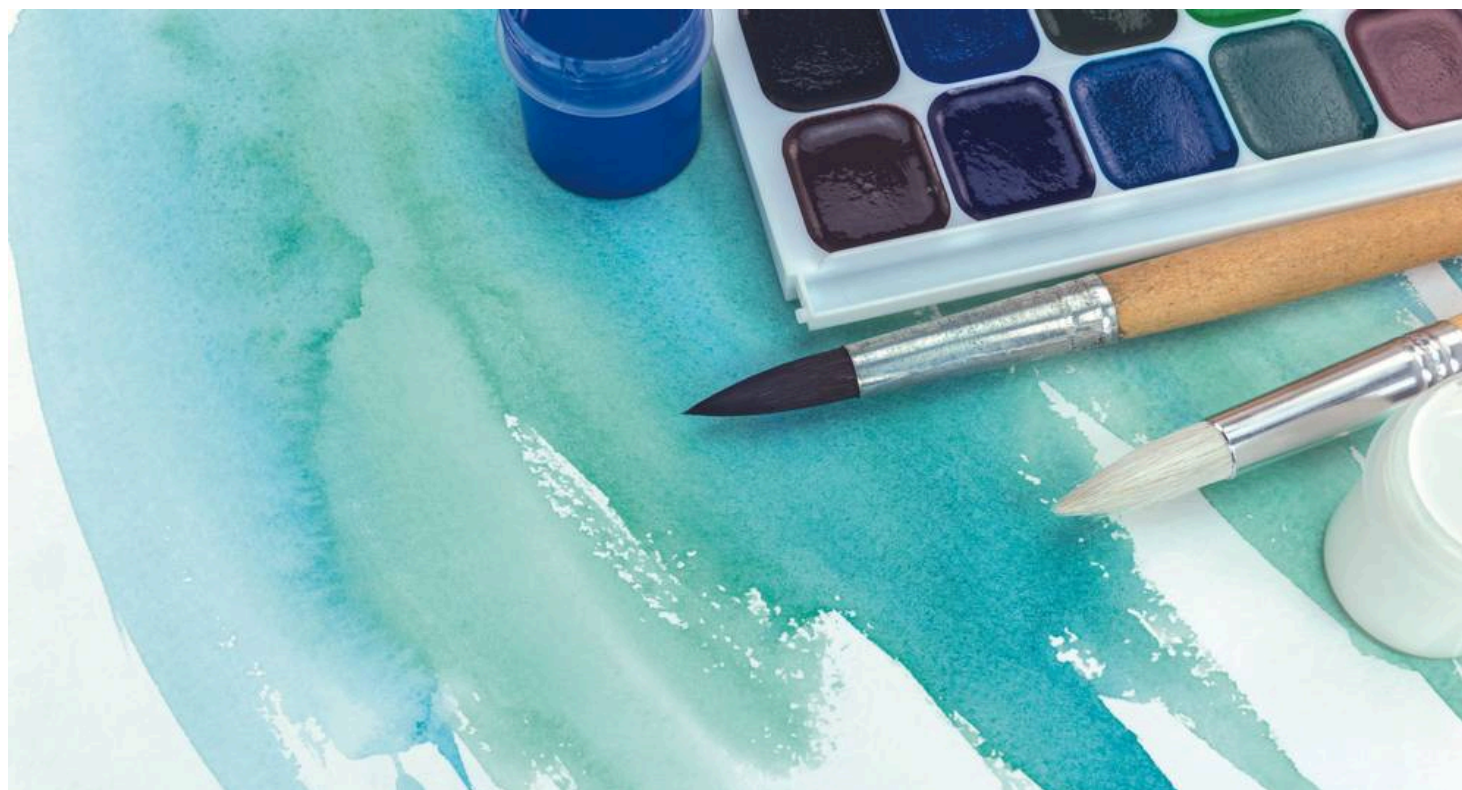


Bold & Free Watercolour Painting in the Cotswolds

Destinations: Cotswolds & England
Trip code: BNPFW



HOLIDAY OVERVIEW

Discover vibrant alternatives to conventional ways of painting with watercolours by focusing on the abstract and going on a 'bold and free' journey. Under the guidance of our art tutor you'll find different ways of looking at shape, colour and subject matter and master some alternative techniques. You can expect bold brushstrokes and original compositions. The aim is to produce an imaginative, spontaneous and personal work to take pride of place on your wall at home.

WHAT'S INCLUDED

- High quality Full Board en-suite accommodation and excellent food in our Country House
- Tuition from our knowledgeable HF Holidays' leader, to ensure you get the most from your holiday
- Loan of wooden A3 art boards

HOLIDAYS HIGHLIGHTS

- Guidance of expert tutors

- Full days to practice in quiet surroundings
- Small group sizes of 15 people or under

ACCOMMODATION

Harrington House

In one of the prettiest spots in the Cotswolds, Harrington House provides a stylish escape in the form of a traditional country retreat, with the trimmings and flourishes you'd expect. All set in a stately Georgian house that mirrors the mellow architectural styles of the Cotswolds and retains many of its original features; the most breathtaking is the sunny walled garden, surrounded by attractive landscaped gardens. As well as 29 bedrooms, two lounges, a cosy bar and pleasant dining room, there are further feathers in this handsome house's hat. Quintessential English countryside, described by JB Priestly as, 'the most English and least spoiled of all our countryside', is just a short stroll away with pretty villages such as Chipping Campden and the Slaughters, rolling landscapes and classic trails from the Cotswold Way to the Gloucestershire Way and Monarch Way waiting for you to discover them.

Matchless Country House Accommodation

Accommodation Info

Need To Know

Important Covid-19 Steps We Have Taken For Guest Safety: Please Read

As we slowly reopen in the wake of the Coronavirus lockdown, our country house stays are set to be organised a little differently; extra steps have been taken to keep our guests, house teams and leaders safe while we return to action. We ask all our guests to respect the measures put in place.

Initially the overall capacity of the houses has been reduced. Guests must wear face coverings in public spaces. To adhere to social distancing guidelines, we have taken the necessary steps to space out furniture and seating in public areas. In addition, a one-way system will be in place around the house. Adequate signage will be displayed to support the direction of travel to be followed by guests and house teams.

As a temporary measure, we will not be servicing rooms during a stay. Extra tea, coffee, milk, and toiletries will be made available on request for all guests. It is recommended that guests bring their own toiletries for the duration of their stay. We have removed all non-essential and reusable items from our rooms for the meantime including cushions, hairdryers, bathrobes, bed throws, and printed materials to reduce the number of items that need to be disinfected. Hairdryers will be available on request. Clean towels will be available on request. We will though be increasing the frequency of cleaning in our public areas providing particular attention to frequently touched items including door handles and handrails.

For now, there is no cream tea on arrival day. We have also adapted our food offering to remove all buffets and open food items. Different sittings may be required for breakfast and dinner due to the occupancy and size of the house. Picnic lunches will now be pre-ordered the night before from an order form in the room. The bar in each country house will be open, and we will be offering a table service for drinks. At this time there is no, or only a very limited, evening social programme available. Outdoor swimming pools at those houses that have them will re-open throughout August, except at Freshwater Bay House, where the pool will remain closed for 2020. Indoor swimming pools will remain closed.

For more information and to see all the steps taken, [visit our page on how house stays will be adapted](#).

Rooms

Tea & coffee-making facilities, TV, Hairdryer, Toiletries, Wi-Fi

Stay in one of the main building's beautifully presented rooms or in the adjacent cottages. With 26 bright and airy bedrooms, Harrington House has plenty of space and there's a range of Good, Better and Best Rooms to choose from: for a stylish stay opt for rooms 1 or 2, both large master bedrooms located on the first floor that come complete with some of the original Palladian features dating back to 1730, pretty feature wallpaper and views out of the front of the building of classic Cotswolds scenery. Alternatively, for a romantic hideaway, plump for Room 23 in the Windrush Cottage and toast your good taste in the private garden that adjoins this large twin room.

All 'Good' rooms are ensuite and furnished to a high standard. There are also several 'Better' and 'Best' Rooms that are either larger or have a desirable view, a more luxurious mattress and larger television – upgrade your stay for just an extra £15-25 per person per night. You can choose a specific room for an extra £30 per room, subject to availability. Upgrade supplements still apply.

Facilities

Free Wi-Fi, boot room and drying room, attractive garden, multi-purpose activity room, lounge, library and board games to borrow

After a day ambling through the Cotswolds, come back to the house and its specially tailored walkers' facilities. Relax by sitting in the gardens or having a game of croquet on the lawn. Retire to either of the two lounges or climb the sweeping stately staircase to the very top of the house where there's an observatory looking out across the rooftops of the village. Then pop in to the snug bar for a pint of local ale and a chin wag with fellow guests about their discoveries.

Food & Drink

As at all our country houses, holidays are full board, from afternoon tea served as a welcome treat through that evening's meal to a hearty breakfast on the day of departure. Lunch is a chance to stock up on our famous picnic snacks. Food at Harrington House is hearty and has a strong emphasis on ingredients from the area and seasonal produce. Once a week the dining room hosts a Local Food Night, when, over a sociable evening, you might tuck in to Cotswold leg of lamb, Bibury rainbow trout and a selection of Gloucestershire cheeses, accompanied with Harrington House homemade chutneys.

Accessibility

For accessibility and assistance information, please contact our expert team on 020 3974 8865

TRAVEL DETAILS

Our address is: Harrington House, Sherborne Street, Bourton-on-the-Water, Gloucestershire, GL54 2BY
Tel: [01451 821213](tel:01451821213)

By Train:

The nearest railway station is Moreton-in-Marsh. However, the nearest mainline station is at Cheltenham Spa which may be more convenient. For train times and route planning by train visit www.nationalrail.co.uk or phone 03457 48 49 50.

By Taxi:

From Moreton-in-Marsh station a taxi takes approximately 20 minutes and costs £22 if pre-booked. From

Cheltenham Spa station a taxi takes around 35 minutes and costs £42 if pre-booked. Please note these are 2020 prices relevant to a 4-seat taxi. 8-seater taxis will be more expensive.

Limozena, our current recommended taxi company, can confirm prices on booking and they will arrange shared taxis wherever possible. To book your taxi please phone or email at least 7-days in advance:

Limozena*
Tel: +44 (0) 1451 820972
Email: denwalmsley@yahoo.co.uk

The return taxi journey can be arranged on your behalf by the Harrington House Manager.

*Limozena is not owned or managed by HF Holidays

By Bus:

From Moreton-in-Marsh station catch the 801 bus to Bourton-on-the-Water, from where it is a short walk to our Country House. Alight next to the Edinburgh Woollen Mill Shop. Cross the road to the war memorial and continue across the bridge. Follow this road for 150 metres until the road forks. Harrington House is on the left.

By Car:

From the A429 take the road into the centre of Bourton-on-the-Water. At the war memorial by the village green, turn into Sherborne Street. Cross the narrow bridge and continue for approximately 100yds. Just before the road forks, Harrington House is on the left. Look out for our sign. A car park is available in the grounds with free parking.

Travelling From Overseas

For most guests, travelling to London Heathrow airport is the most convenient option.

From Heathrow first take the train to London Paddington station. From here there are direct trains to Moreton-in-Marsh. It's a relatively straightforward journey - just over 2 hours. See www.nationalrail.co.uk for train times.

From Moreton-in-Marsh you can travel on to Bourton-on-the-Water by bus or taxi (see above).

LOCAL AREA

Bourton-on-the-Water is situated at the heart of the Cotswolds, a beautiful area of rolling green hills and attractive stone towns and villages.

Harrington House is located in a quiet street, just 100 metres from the centre of Bourton. This is one of the most popular villages in the Cotswolds, frequently busy with visitors. The River Windrush winds its way through the central village green and is crossed by a series of attractive stone bridges.

Bourton-on-the-Water is a popular destination in its own right with its specialist shops and attractive village green. Local attractions include the [Cotswold Motoring Museum](#), [Model Village](#) and [Birdland Wildlife Park](#), all within easy walking distance.

The village has a good range of facilities including a small supermarket, post office, newsagent, pubs and bank.

During your stay at Harrington House you may enjoy visiting the following places of interest:

Chipping Campden

The mellow market town of Chipping Campden, about 30 minutes' drive north of Bourton-on-the-Water, is one of the most visited towns in the Cotswolds.

Hidcote Manor Gardens

Owned by the National Trust, [Hidcote](#) is a small manor house with an exceptional garden designed in the Arts and Crafts style. Around 35 minutes' north from Bourton-on-the-Water.

Bibury

William Morris – one of the key figures in the Arts & Craft Movement – once described [Bibury](#) as 'the most beautiful village in England'. Its most famous part is the row of stone weavers' cottages in Arlington Row next to the River Coln which date back to 1380; a more attractive set of buildings is hard to imagine. Bibury is 12 miles from Harrington House.

Broadway

Considered as one of the most beautiful villages in Britain, it is easy to see why so many visitors are attracted to Broadway. Take a walk to [Broadway Tower](#) for stunning views of the Vale of Evesham. Around 30 minutes' drive from Bourton.

Cotswold Farm Park - Adam Henson's Farm

[Cotswold Farm Park](#) was set up in 1971 by Joe Henson – father of Adam Henson, one of the presenters of the BBC's Countryfile programme. The park is a centre for rare breeds which can be seen in the animal barns and on the rare breed trail. The park is about 5 miles from Harrington House – a ten-minute drive by car.

Stratford-upon-Avon

Famous for its Shakespeare connections, Stratford is an attractive town spanning the River Avon. Of particular interest are the [Royal Shakespeare Theatre](#) and the [Shakespeare's Birthplace Museum](#). Around 40 minutes' drive from Bourton.

Blenheim Palace

[Blenheim Palace](#) is one of the grandest and best-known stately homes in Britain. It sits in extensive parkland and is also famous as being the ancestral home of Winston Churchill.

Cotswold Wildlife Park And Gardens

Set in 160 acres of beautiful parklands, the [Cotswold Wildlife Park](#) is home to an astonishing array of animals from large mammals and primates to birds and reptiles. It is one of the UK's largest zoological collections. The park is divided into four sections, each with its own team of keepers. The park is about 12 miles from Harrington House and can be reached in about 22 minutes by car.

Cheltenham

The fine Regency spa town of Cheltenham has an excellent range of shops and facilities. Cheltenham is around 25 minutes' drive from Bourton, and can also be reached by an hourly local bus.

Gloucester

The Cathedral city of Gloucester is about 35 minutes' drive to the west of Bourton. The fine [Norman cathedral](#) is well worth visiting, as is the [National Waterways Museum](#).

Gloucestershire Warwickshire Steam Railway

Ride the [GWSR steam railway](#) through attractive Cotswold countryside from Cheltenham to Toddington about 30 minutes' drive from Bourton. Now restored, this was once the Great Western main line to Birmingham.

Oxford

The famous university city of Oxford is about an hour's drive from Bourton-on-the-Water. You may wish to stroll through the historic colleges or visit the [Ashmolean Museum](#), the University of Oxford's museum of art and archaeology founded in 1683.

USEFUL HOLIDAY INFORMATION

Essential Information

As the work is based around watercolour abstraction in art there are no great restrictions on materials and each artists is welcome to bring along items of their choice.

However the following is a basic suggested list:

- A4 sketch pad and pencil and ink drawing pens.
- Bring along any brushes and watercolours you may have, preferably tube paints as the volume of colour needed for a painting may be quite large [student or professional quality]. A small range of colours say 4 or 5 of your own colour preference is all that is needed. One of each of the primary colours red, blue, yellow will give quite a varied palette.
- Palette for mixing colours.
- Brushes: medium mop, flat or 1/2" one stroke brush, round brush size 12, rigger brush size 3; a brush for stippling e.g. an old oil painting brush, old toothbrush for spatter effect.
- Watercolour paper separate sheets or pad e.g. A4, 12 x 8 inches; A3, 16 x 12 inches
- Scrap paper for testing colours and effects.
- Water jars/containers.
- Masking fluid, masking tape.

Additional items can include acrylic inks, fountain pen inks etc.

HOW TO BOOK

When you're ready to book, you can choose to **book online** or book **over the phone**. Our website offers secure online booking for our holidays, is available 24/7, and offers more in-depth information about all our holidays. If you prefer to call us, our experienced and knowledgeable team are available to answer any specific questions you have and can offer guidance as to which holiday is best suited to your needs.

Our office is open: Monday to Friday: 9am – 7pm Saturday: 9am – 1pm Sunday & Bank Holiday Monday: closed

PAYING YOUR DEPOSIT

To secure the holiday of your choice, you will need to pay a deposit: UK & European Holidays: £150 per person and Worldwide Holidays: £250 per person. You can pay your deposit by debit or credit card with no additional card fees charged or make an online BACS payment directly into HF's bank account, please see details under BACS payments. You can also pay your deposit by cheque within seven days of booking. Cheques should be made payable to 'HF Holidays Ltd' with your booking reference / Order ID on the back.

NON-MEMBER FEE

Non-members can join our holidays by paying a Non-Member's fee of £20 per person per holiday.

Alternatively, full membership is available from £100 – visit hfholidays.co.uk/membership for details.

BACS PAYMENTS

Please quote your booking reference / Order ID when you make your payment online: Bank Name: Svenska Handelsbanken AB (publ) Account Name: HF Holidays Ltd Account Number: 35923304 Sort Code: 40-51-62 IBAN: GB92HAND40516235923304 Swift / Bic Code: HANDGB22

Once we have received your booking and deposit, we will send a confirmation invoice to the lead name. Please check this carefully. For bookings 'with flights' it is essential that the names on your booking confirmation invoice match those on your passport for bookings overseas. Please advise us immediately of any errors. Any name changes after the balance of your holiday has been paid will be subject to a fee levied by the airline.

MANAGE MY BOOKINGS

Payments can also be made through the Manage My Booking function on our website. Click on the link at the top of our homepage. This is available to all customers who provide an email address at the time of booking.

YOUR FINAL BALANCE

The balance is due 10 weeks before departure. As with paying your deposit, you can pay your final balance by debit or credit card, make an online BACS payment directly into HF's bank account or pay by cheque.

TRAVEL INSURANCE

Travel insurance is an important part of any booking and essential for one of our holidays. HF Holidays works with specialist. Insurance Brokers Campbell Irvine Direct. For more information or to obtain a quote call them on 01702 427 236 or visit hfholidays.co.uk/insurance

PEACE OF MIND

ATOL:

The air holidays and flights in this brochure are ATOL-protected, since we hold an Air Travel Organiser's Licence granted by the Civil Aviation Authority. Our ATOL number is ATOL 710. In the unlikely event of our insolvency, the CAA will ensure that you are not stranded abroad and will arrange to refund any money you have paid us for advance bookings. For further information visit the ATOL website atol.org.uk

MEMBER OF ABTOT:

HF Holidays is a member of ABTOT (The Association of Bonded Travel Organisers Trust Limited) which provides financial protection under the Package Travel, Package Holidays and Package Tours Regulations 1992 for HF Holidays Ltd and in the event of their insolvency, protection is provided for the following: 1. non-flight packages commencing in and returning to the UK; 2. non-flight packages commencing and returning to a country other than the UK; 3. flight inclusive packages that commence outside of the UK and Republic of Ireland, which are sold to customers outside of the UK and Republic of Ireland. 1, 2 and 3 provides for a refund in the event you have not yet travelled. 1 and 3 provides for repatriation. Please note that bookings made outside the UK and Republic of Ireland are only protected by ABTOT when purchased directly with HF Holidays Ltd.

TRIP NOTE VALIDITY

These Trip Notes are valid based on the date printed at the bottom of the page. They will occasionally be updated post booking and pre-departure. We will send you the latest trip notes prior to departure through a link in your pre departure documents or we can send you a copy in the post if preferred.

In booking this trip you should be confident in your ability to participate in all activities described in these Trip Notes. If you have any doubt about your suitability you should call HF Holidays and ask to speak to one of the team about this itinerary.

The information in these Trip Notes is given in good faith. Where differences exist between the Trip Notes and

our current brochure, the Trip Notes supersede the brochure. All holidays can be subject to unexpected changes; so please be prepared to be flexible where necessary. At times, it may not be possible to follow the itinerary as planned due to weather conditions, political, physical or other factors. In these circumstances we will make the best possible alternative arrangements to maintain the integrity of the original itinerary.

PRICE GUARANTEE

We promise that our earliest published prices will always be the best and if we reduce our holiday price after your booking has been confirmed, we will pass this reduction on to you. Our price promise applies if any subsequent offer price is for an identical holiday, duration, location and date and does not cover any optional extras, flights or additional services.

Document produced: 23-01-2021

