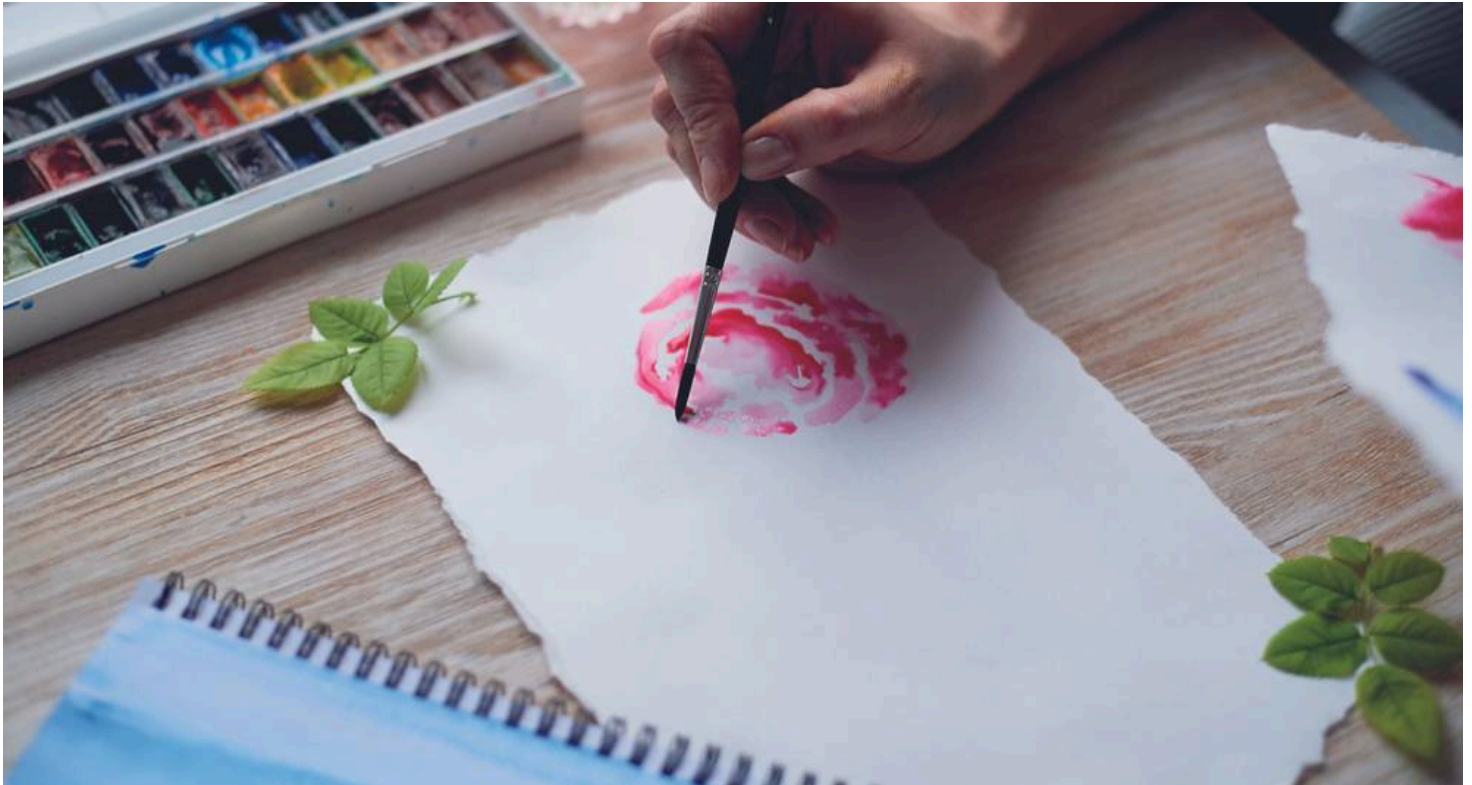


Introduction to Watercolours in the South Downs

Destinations: South Downs & England
Trip code: AWPBA-3



HOLIDAY OVERVIEW

If you always wanted to learn to paint but lacked the confidence or didn't know where to begin, then look no further. With expert tuition from our leader in a relaxed and friendly environment, you'll learn the basic techniques including colour mixing, basic washes, the use of light and shade, complementary colours and composition. You can enjoy the sociable atmosphere of painting in a group inside our country house or out in the grounds – a great place to practise trees and skies.

WHAT'S INCLUDED

- High quality Full Board en-suite accommodation and excellent food in our Country House
- Tuition from our knowledgeable HF Holidays' leader, to ensure you get the most from your holiday
- Loan of wooden A3 art boards

HOLIDAYS HIGHLIGHTS

- Experience the joys of watercolours with a group of fellow artists

- Learn to use the medium under the guidance of your HF Holidays Tutor
- Practise in small group sizes of 15 people or fewer
- Build your confidence in using a variety of techniques

ITINERARY

Day 1: Arrival Day

You're welcome to check in from 4pm onwards.

Enjoy a complimentary Afternoon Tea on arrival.

Day 2: Other Days

After a hearty breakfast, we get cracking and enjoy our first watercolour painting session. We'll enjoy a short explanation of water colour and the equipment, including the different types of paper.

Our knowledgeable leader will go on to show us the different ways to lay down paint, using two or more colours – then it's our turn to find out how they react when put together! In no time at all we'll be playing with tonal glazes and practising building up our colours.

Later, we can prepare our board for the afternoons work. We'll have fun painting a small monochrome (one single colour) landscape picture using glazing, before moving on to creating some skies.

These might include sunsets and stormy weather (by cleverly using two or more colours) and how to remove paint to form different cloud effects. By mid-morning and mid-afternoon, we'll have earned a welcome cuppa together as we exchange enthusiasm and ideas about our artwork.

Later on, we can enjoy the sociable activities on offer at the Country House or quietly relax in the bar or a cosy lounge.

Day 3: Moving On To A Landscape

Our second day starts with some tuition on colour mixing, followed by a demonstration and practice of painting distance, hills and trees. Then we spend the rest of our day totally absorbed in this fascinating and creative art form, as we are paint a simple landscape together, with our patient leader on hand to help us step-by-step along the way.

This evening we can create a small informal exhibition of our work for everyone to enjoy. This is entirely optional, but it's great fun and a very rewarding way to end our lovely holiday.

Day 4: Departure Day

Enjoy a leisurely breakfast before making your way home.

ACCOMMODATION

Abingworth Hall

Tucked away in the village of Thakeham at the foot of the South Downs, Abingworth Hall has stood in one form or another since the 13th century. Gutted by fire, it was rebuilt in 1910 in its current distinctive style. As well as 27 en-suite rooms the house has all the ingredients you need for the perfect country house stay: three comfortable lounges with squishy sofas to kick back in, the largest of which opens onto an attractive conservatory and bar in which to dally, great food and super-comfy rooms to retire to. You're spoilt for choice when it comes to walking here; go for a lazy amble around the wildlife rich chalk Downlands to discover a

colourful tapestry of historic villages, thatched cottages, pastoral landscapes and vibrant market towns. Highlights of your stay might include the Seven Sisters, the Glorious Goodwood estate, the Devil's Dyke and Chanctonbury Ring, as well as Arundel and the National Trust property at Petworth. Take your pick.

Matchless Country House Accommodation

Accommodation Info

Need To Know

Important Covid-19 Steps We Have Taken For Guest Safety: Please Read

Following the relaxation in government guidance on 19 July, we are continuing to take extra steps to keep our guests leaders, and staff safe in our HF country houses. We ask all our guests to respect the measures put in place.

The English, Scottish and Welsh governments are not in sync, so measures in our country houses will vary between the nations. With the relaxation of social distancing in England, from 19 July we will be allowing larger groups to dine and relax in the bar together. However, we will still give guests space e.g. we will seat 6 people at a table where pre-pandemic we may have seated 8. We will ensure our public rooms are well ventilated by opening doors and windows wherever possible. If you have any concerns about distancing, please speak to the House Manager. The government recommendation for England is to wear face coverings in crowded areas. You must wear a face covering by law in public areas in hotels in Scotland. This is mandatory in public spaces; however, face coverings will not be required whilst eating and drinking in the restaurant and bar areas or whilst you are outside our houses. In Wales face coverings will remain a legal requirement indoors, with the exception of hospitality premises.

As a temporary measure, we will not be servicing rooms during a stay. Extra tea, coffee, milk, and toiletries will be made available on request for all guests. It is recommended that guests bring their own toiletries for the duration of their stay. We will though be increasing the frequency of cleaning in our public areas providing particular attention to frequently touched items including door handles and handrails.

Menus for the week will be available in your room on arrival. A self-service breakfast will be served from 7.45am – 9am. Picnic lunches will now be pre-ordered the night before from an order form in the room. Evening meals will be table service. A dinner order form will be available in each room for completion. Dinner is served at either 7.15pm or 7.30pm. Please check at the house for details. The bar will be open. We will be offering a table service but guests can also come to the bar to order (depending on local restrictions).

Join our team after dinner on Wednesday evenings for the HF Big Pub Quiz. There will be one other evening of entertainment at the start of the week, which will vary depending on the country house that you are staying at. Our Walk Leaders will also be on hand in the bar or lounge for individual or small group walks talks briefings, which allow guests to talk through the following day's walk options and ask any questions. All of our swimming pools are open, except for Glen Coe, which will not re-open this year. Swimming Pools will be operated in line with maximum capacities.

For more information and to see all the steps taken, [visit our page on how house stays will be adapted](#).

Rooms

Tea & coffee-making facilities, TV, Hairdryer, Toiletries, Wi-Fi

Stay in one of the Hall's smartly presented rooms, which make use of every nook-and-cranny in the interesting architecture of this characterful house. With 27 bedrooms, Abingworth Hall has plenty of space and there's a range of Good and Better Rooms to choose from. Clean and bright, with accent colours to offset the simple

palette, the rooms are airy and light. Better Rooms might have a feature wall or strong print wallpaper as well as pretty tiles in the ensuite bathroom.

All 'Good' rooms are ensuite and furnished to a high standard. There are also several 'Better' Rooms that are either larger or have a desirable view, a more luxurious mattress and larger television – upgrade your stay for just an extra £15-25 per person per night. You can choose a specific room for an extra £30 per room, subject to availability. Upgrade supplements still apply.

Facilities

Free Wi-Fi, boot room and drying room, extensive garden, outdoor swimming pool, multi-purpose activity room, three lounges, library and board games to borrow

After a day strolling on the South Downs, come back to the house and its specially tailored walkers' facilities. Relax in the large gardens and sit by the pretty pond, turn your hand to croquet or practice on the putting green. Ease through a couple of lengths of the heated outdoor pool if you've still got energy to burn. Hole up in the light-filled conservatory with pretty views of the gardens or retire to the Drawing Room with its wood-panelled walls, log burner, library of books to browse and comfy seats to sink in to; there's a telescope for you to scour the night sky too. In the evening, take your seat in the bar or join fellow guests in the large ballroom for the evening activity.

Food & Drink

As at all our country houses, holidays are full board, from afternoon tea served as a welcome treat through that evening's meal to a hearty breakfast on the day of departure. Lunch is a chance to stock up on our famous picnic snacks. Food at Abingworth Hall is varied and tasty and has a strong emphasis on ingredients from the area and seasonal produce. Once a week the dining room, which has a giant brick fireplace at its heart, hosts a Local Food Night, when, over a sociable evening, you might try a five-course feast of local Sussex flavours. Look out for the Sussex Churdle, a traditional, meaty ploughboy lunch, local Chiddingly beef cooked with black olives and Sussex smokies, smoked haddock served in a prawn sauce. Cap it all with a Sussex Pond Pudding, a pud that's part of the honourable tradition of British dishes with names to pique the interest more than the appetite, which is actually bright and zingy, suety and syrupy all at the same time

Accessibility

For accessibility and assistance information, please contact our expert team on 020 3974 8865 or [view the accessibility information online for Abingworth Hall](#)

TRAVEL DETAILS

Our address is: Abingworth Hall, Storrington Road, Thakeham, West Sussex, RH20 3EF
Tel: [01798 813636](tel:01798813636)

BY TRAIN:

The nearest railway station to Abingworth Hall is Pulborough. Please note that Pulborough station has a short platform, check the departure boards for which carriage to sit in. For train times and route planning by train visit www.nationalrail.co.uk or phone 03457 48 49 50.

BY TAXI:

The 6-mile journey from Pulborough railway station takes approximately 15 minutes. Please try to avoid arriving at Pulborough station between 2.45pm and 3.20pm, as there may not be taxis available for your onward journey to Abingworth Hall due to school pick-ups. You can pre-book a taxi from our recommended taxi company, MJ Cars. The price for a 4-seat taxi is around £16. 8-seat taxis are also available at a higher rate. Please pre-book your taxi at least 7 days in advance by contacting:

MJ Cars*
Tel: +44 (0)1903 745414
Email: mjcars@btconnect.com

The return journey can be arranged on your behalf by the Abingworth Hall Manager.

*MJ Cars is not owned or managed by HF Holidays.

BY CAR:

From the M25 take either the A24 or the M23 and then the A264 towards Horsham. At the Great Daux roundabout go south on the A24 towards Worthing. Go straight over 2 roundabouts and then at the traffic light cross roads turn right onto the A272 signposted to Billingshurst and Petersfield. After 3 miles turn left onto the B2139 (The Selsey Arms on left). After 3.5 miles pass the turning for Thakeham on the left. After half a mile, Abingworth Hall is on the left, directly after the national speed limit signs.

From the M27 continue onto the A27 and around Chichester. At Fontwell Park roundabout take the first exit to continue on the A27 and at the next roundabout take the first exit on to the A29. After approx. 4 miles, at a roundabout, take the 2nd exit on to the B2139 to Storrington. At the mini roundabout in Storrington, take the 2nd exit onto the A283. Continue through Storrington and take the first exit at the mini roundabout by the Anchor Inn on to the B2139 towards Thakeham. Take the 2nd exit at the next mini roundabout and then take the 1st exit at next mini roundabout (by Steyning Grammar School). Continue down this road until you see 30mph signs. Abingworth Hall is just before these signs, on the right

LOCAL AREA

Abingworth Hall is situated amidst gentle rolling farmland at the foot of the South Downs. The nearest facilities are in the village of Storrington, about two miles away. Here you'll find a small supermarket, post office, newsagent, pubs and a bank.

During your stay at Abingworth Hall you may enjoy visiting the following places of interest:

Arundel

The quaint town of Arundel, about 30 minutes' drive away, is dominated by its castle, the home of the Duke and Duchess of Norfolk. During your visit you may enjoy a walk in [Arundel Castle's](#) extensive grounds, or beside the tranquil river Arun.

Arundel Wetlands Centre

This 60-acre nature reserve is run by the Wildfowl and Wetlands Trust and provides a protected habitat for a wide range of swans, geese, ducks and other wetland birds. A network of paths takes visitors to a number of viewing areas to enjoy watching the wildlife. [Arundel Wetlands Centre](#) is just outside Arundel town, about a 30-minute drive from Abingworth Hall.

Bignor Roman Villa

[Bignor Roman Villa](#) was discovered in 1811 by a man ploughing a field. This Roman home clearly belonged to a family of some consequence and features many fine mosaic floors of intricate design. It is located just outside Pulborough, about 10 miles from Abingworth Hall.

Pulborough Brooks Nature Reserve

Just 4 miles from Abingworth Hall, [Pulborough Brooks](#) is a large nature reserve in the Arun Valley managed by

the RSPB. A network of nature trails take visitors into the reserve where there a range of habitats from ponds and ditches to woods and meadow. The site is an important place for over-wintering wildfowl and for nesting waders. The reserve can be reached either by road or on foot from Abingworth Hall.

Uppark House

Completely restored after an extensive fire in 1989, this stately National Trust property has ornate rooms and lovely gardens with surrounding woodlands. [Uppark House and Garden](#) is around 50 minutes' drive from Abingworth.

Brighton

The cosmopolitan seaside city of Brighton is about 40 minutes' drive from Abingworth Hall and has an excellent range of specialist shops, entertainment, and its famous pier. You may also enjoy a visit to the [Royal Pavilion](#), built in the early 19th century by George IV.

Amberley Working Museum

Just 15 minutes' drive from Abingworth Hall, this large open-air museum tells the industrial story of the downs, complete with a steam railway, vintage buses and restored quarry machinery. [Amberley Museum](#) is just outside Amberley village which is also well worth a visit with its sleepy streets lined with thatched cottages and flower-filled gardens. The village is also home to a small [pottery](#).

Parham House

Just 10 to 15 minutes' drive away, Elizabethan [Parham House](#) is surrounded by an extensive deer park. Some of our guided walks go through the deer park.

Chichester

The historic cathedral city of Chichester, about 45 minutes' drive away, has plenty of interest. Visit the impressive [Chichester Cathedral](#) and take a walk which follows the old city walls.

Fishbourne Roman Palace

Just a couple of miles outside Chichester lies [Fishbourne Roman Palace](#), the largest residential Roman building found in Britain. It was discovered in 1960; excavations revealed many superb mosaics.

Petworth House

A large late 17th century mansion, now run by the National Trust with extensive grounds that were landscaped by 'Capability' Brown. The surrounding deer park is home to a large herd of fallow deer. [Petworth House](#) is around 30 minutes' drive from Abingworth.

Weald & Downland Living Museum

Located on the Downs, near the village of Singleton, this excellent open-air museum contains many restored buildings that bring the history of Sussex to life. These include a working watermill and a re-creation of a typical downland village. The [Weald & Downland Living Museum](#) is also home to the popular BBC TV programme 'The Repair Shop'. The museum is around 45 minutes' drive from Abingworth.

Bluebell Railway

[The Bluebell Railway](#) is one of Britain's premier heritage steam railways with an impressive collection of 50 locomotives, representing the Southern Railway and its predecessors. The line runs through rolling countryside

from Sheffield Park to East Grinstead, about 40 minutes' drive from Abingworth.

USEFUL HOLIDAY INFORMATION

Essential Information

If you have to buy anything, your leader suggests that you buy the best quality you can afford for all your equipment.

- Any water colour equipment you might have, including tubes or pans of paint, a simple beginners' box will be fine
- Watercolour paper (eg Bockinford 140lbs)
- Brushes: bring any you already have, but if you need to buy, all you'll need is: a no. 2, 4, 8 round, a 1/2" flat and 1" rigger
- 2B pencil
- Kitchen roll
- Masking tape and or gummed paper tape
- 2 mounts: 1 approx 10x8" aperture; 1 approx 12x10" aperture
- Some kind of support ie Tray or lightweight board approx. 16x 20 inches *

*Lightweight wooden A3 drawing boards are available to borrow from the Country House

HOW TO BOOK

When you're ready to book, you can choose to **book online** or book **over the phone**. Our website offers secure online booking for our holidays, is available 24/7, and offers more in-depth information about all our holidays. If you prefer to call us, our experienced and knowledgeable team are available to answer any specific questions you have and can offer guidance as to which holiday is best suited to your needs.

Our office is open: Monday to Friday: 9am – 7pm Saturday: 9am – 1pm Sunday & Bank Holiday Monday: closed

PAYING YOUR DEPOSIT

To secure the holiday of your choice, you will need to pay a deposit: UK & European Holidays: £150 per person and Worldwide Holidays: £250 per person. You can pay your deposit by debit or credit card with no additional card fees charged or make an online BACS payment directly into HF's bank account, please see details under BACS payments. You can also pay your deposit by cheque within seven days of booking. Cheques should be made payable to 'HF Holidays Ltd' with your booking reference / Order ID on the back.

NON-MEMBER FEE

Non-members can join our holidays by paying a Non-Member's fee of £30 per person per holiday. Alternatively, full membership is available from £100 – visit hfholidays.co.uk/membership for details.

BACS PAYMENTS

Please quote your booking reference / Order ID when you make your payment online: Bank Name: Svenska Handelsbanken AB (publ) Account Name: HF Holidays Ltd Account Number: 35923304 Sort Code: 40-51-62 IBAN: GB92HAND40516235923304 Swift / Bic Code: HANDGB22

Once we have received your booking and deposit, we will send a confirmation invoice to the lead name. Please check this carefully. For bookings 'with flights' it is essential that the names on your booking confirmation invoice match those on your passport for bookings overseas. Please advise us immediately of any errors. Any name changes after the balance of your holiday has been paid will be subject to a fee levied by the airline.

MANAGE MY BOOKINGS

Payments can also be made through the Manage My Booking function on our website. Click on the link at the top of our homepage. This is available to all customers who provide an email address at the time of booking.

YOUR FINAL BALANCE

The balance is due 10 weeks before departure. As with paying your deposit, you can pay your final balance by debit or credit card, make an online BACS payment directly into HF's bank account or pay by cheque.

TRAVEL INSURANCE

Travel insurance is an important part of any booking and essential for one of our holidays. HF Holidays works with specialist. Insurance Brokers Campbell Irvine Direct. For more information or to obtain a quote call them on 01702 427 236 or visit hfholidays.co.uk/insurance

PEACE OF MIND

ATOL:

The air holidays and flights in this brochure are ATOL-protected, since we hold an Air Travel Organiser's Licence granted by the Civil Aviation Authority. Our ATOL number is ATOL 710. In the unlikely event of our insolvency, the CAA will ensure that you are not stranded abroad and will arrange to refund any money you have paid us for advance bookings. For further information visit the ATOL website atol.org.uk

MEMBER OF ABTOT:

HF Holidays is a member of ABTOT (The Association of Bonded Travel Organisers Trust Limited) which provides financial protection under the Package Travel, Package Holidays and Package Tours Regulations 1992 for HF Holidays Ltd and in the event of their insolvency, protection is provided for the following: 1. non-flight packages commencing in and returning to the UK; 2. non-flight packages commencing and returning to a country other than the UK; 3. flight inclusive packages that commence outside of the UK and Republic of Ireland, which are sold to customers outside of the UK and Republic of Ireland. 1, 2 and 3 provides for a refund in the event you have not yet travelled. 1 and 3 provides for repatriation. Please note that bookings made outside the UK and Republic of Ireland are only protected by ABTOT when purchased directly with HF Holidays Ltd.

TRIP NOTE VALIDITY

These Trip Notes are valid based on the date printed at the bottom of the page. They will occasionally be updated post booking and pre-departure. We will send you the latest trip notes prior to departure through a link in your pre departure documents or we can send you a copy in the post if preferred.

In booking this trip you should be confident in your ability to participate in all activities described in these Trip Notes. If you have any doubt about your suitability you should call HF Holidays and ask to speak to one of the team about this itinerary.

The information in these Trip Notes is given in good faith. Where differences exist between the Trip Notes and our current brochure, the Trip Notes supersede the brochure. All holidays can be subject to unexpected changes; so please be prepared to be flexible where necessary. At times, it may not be possible to follow the itinerary as planned due to weather conditions, political, physical or other factors. In these circumstances we will make the best possible alternative arrangements to maintain the integrity of the original itinerary.

PRICE GUARANTEE

We promise that our earliest published prices will always be the best and if we reduce our holiday price after your booking has been confirmed, we will pass this reduction on to you. Our price promise applies if any subsequent offer price is for an identical holiday, duration, location and date and does not cover any optional extras, flights or additional services.

Document produced: 21-09-2021

