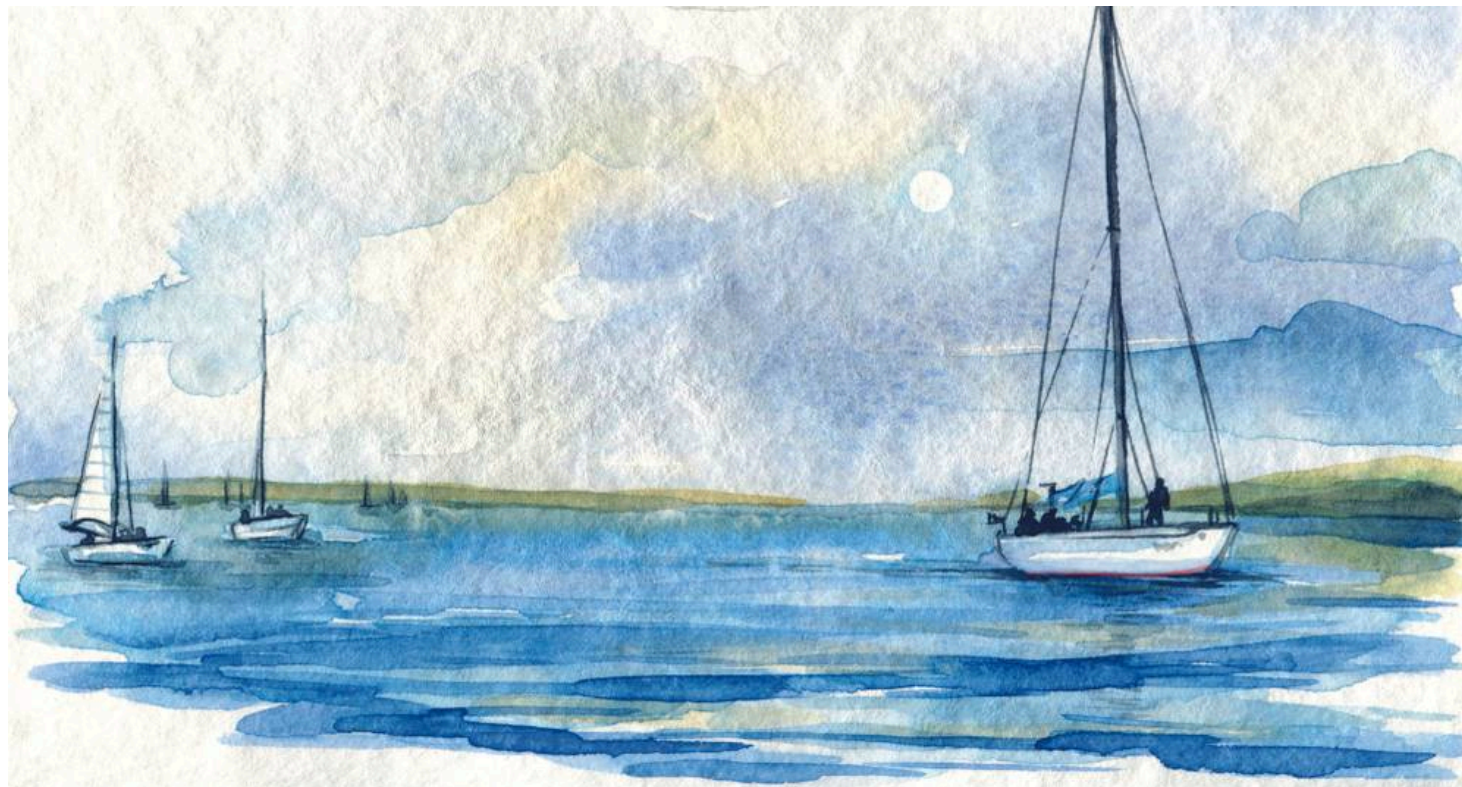


7-Night Landscape Painting Holiday in Northumberland

Destinations: Northumberland & England
Trip code: ALPLA-7



HOLIDAY OVERVIEW

Find inspiration in the heather clad moorland, castle ruins and glorious beachscapes of Northumberland. In the company of an accomplished artist, we'll explore the local area and discover the finest sites to paint. These holidays are designed to cater for any level of experience, with various techniques and topics being introduced. We'll walk up to 2 miles (3km) each day, carrying our equipment.

WHAT'S INCLUDED

- High quality Full Board en-suite accommodation and excellent food in our Country House
- Tuition from our knowledgeable HF Holidays' leader, to ensure you get the most from your holiday
- Loan of lightweight wooden A3 art boards
- All transport to and from painting locations on your holiday

HOLIDAYS HIGHLIGHTS

- Guidance of expert tutors

- Full days to practice on beautiful surroundings
- Small group sizes of 15 people or under

ITINERARY

Day 1: Arrival Day

You can check in to your room from 2.30pm onwards (better rooms from 1pm). Please join us for afternoon tea. All guests are invited – we'll introduce your leader and welcome you to your holiday.

When we go out into the lovely local countryside, we'll be walking up to 2 miles (3km) carrying our equipment as we find the very best landscapes to capture on our canvas.

Day 2: Skies And Seascapes

Today we will explore the village and beach area around Nether Grange. This will give opportunities to consider composition for preliminary sketches. There are some lovely scenes around the village and along the shoreline. We will return to the house studio to practise painting techniques for development of these sketches. Focus will be on washes for skies and seascapes.

Day 3: Colour And Tone For Creating Distance

After a preparing for the day's painting we will venture along the coast to where it really opens up. The Northumberland beaches and castles are stunning and nowhere more so than at Bamburgh. Here we will consider best views and pleasing compositions. The focus will be on colour and tone for creating distance. Refreshments (and alternative views for sketches!) are available in the pretty village adjacent to the castle itself. Before returning, a short drive along the coast will offer views of the iconic castle of Lindisfarne on Holy Island. The aim of the day is to come back with a wealth of painted studies and inspiration to think about on our free day tomorrow.

Day 4: Free Day

Our Discovery Points help you make the most out of your free day (Wednesday). There's plenty of maps and a selection of the best local walking routes, as well as weather forecasts and public transport options – plus details about other places to visit.

Day 5: Foreground Detail And Perspective

Heading south of Alnmouth today takes us to Warkworth and Amble where lies a picturesque marina. The recommended view is along the estuary near the yacht clubhouse, with Warkworth and the castle in the distance. On the estuary, and on the bank, there are a number of boats of different sizes: a pleasing and challenging subject to choose! Today's focus will be on foreground detail and perspective.

Day 6: Colour Mixing

A short distance north of Nether Grange lies Craster, the home of Craster kippers! It has a small port, with only a few boats now. From certain positions the ruins of Dunstanburgh Castle, about 1 1/2 miles away, can be seen. You can walk towards the castle, along a wide grassy track for better views. Colour mixing will be important today, aiming to capture the rolling, grassy landscape as it meets the beach and waves beyond.

Day 7: Focusing On Line And Tone

For a change of focus today we will visit the Woodhorn Colliery Museum. The winding gear, a feature of this landscape for many years, is preserved here. The museum, with free entry, offers some interesting views of this

area's past. Sketches, focusing on line and tone, may be made before returning to the coast. We will stop at Druridge Bay where the dunes, beach and wading birds will offer more opportunities for dramatic seascapes.

Day 8: Departure Day

Depart after a leisurely breakfast.

ACCOMMODATION

Nether Grange

Sitting pretty in the centre of the quiet harbour village of Alnmouth, Nether Grange stands in an area rich in natural beauty and historic gravitas. There are moving views of the dramatic North Sea coastline from the house too. This one-time 18th century granary was first converted into a large family home for the High Sheriff of Northumberland in the 19th century and then reimagined as a characterful hikers' hotel. Many of the 36 bedrooms look out across the sea, while a large lounge, conservatory and adjoining bar are there to entertain you. Easily accessible from the house are the coast path while inland lies the Northumberland National Park. North are the Farne Islands and their spectacular seabird colonies and close by is Lindisfarne and its romantic castle accessible at low-tide via an ancient pilgrim's path. Nearby too is the medieval market town of Alnwick and its eponymous castle, as well as the atmospheric ruins of Dunstanburgh Castle, perched on a grassy peninsula to the south of Embelton Bay. Best of all though is Bamburgh Castle, built to resemble a magnificent medieval fortress but actually an impressive Victorian folly.

Matchless Country House Accommodation

Accommodation Info

Need To Know

Important Covid-19 Steps We Have Taken For Guest Safety: Please Read

As we slowly reopen in the wake of the Coronavirus lockdown, our country house stays are set to be organised a little differently; extra steps have been taken to keep our guests, house teams and leaders safe while we return to action. We ask all our guests to respect the measures put in place.

Initially the overall capacity of the houses has been reduced. Guests must wear face coverings in public spaces. To adhere to social distancing guidelines, we have taken the necessary steps to space out furniture and seating in public areas. In addition, a one-way system will be in place around the house. Adequate signage will be displayed to support the direction of travel to be followed by guests and house teams.

As a temporary measure, we will not be servicing rooms during a stay. Extra tea, coffee, milk, and toiletries will be made available on request for all guests. It is recommended that guests bring their own toiletries for the duration of their stay. We have removed all non-essential and reusable items from our rooms for the meantime including cushions, hairdryers, bathrobes, bed throws, and printed materials to reduce the number of items that need to be disinfected. Hairdryers will be available on request. Clean towels will be available on request. We will though be increasing the frequency of cleaning in our public areas providing particular attention to frequently touched items including door handles and handrails.

For now, there is no cream tea on arrival day. We have also adapted our food offering to remove all buffets and open food items. Different sittings may be required for breakfast and dinner due to the occupancy and size of the house. Picnic lunches will now be pre-ordered the night before from an order form in the room. The bar in each country house will be open, and we will be offering a table service for drinks. At this time there is

no, or only a very limited, evening social programme available. Outdoor swimming pools at those houses that have them will re-open throughout August, except at Freshwater Bay House, where the pool will remain closed for 2020. Indoor swimming pools will remain closed.

For more information and to see all the steps taken, [visit our page on how house stays will be adapted](#).

Rooms

Tea & coffee-making facilities, TV, Hairdryer, Toiletries, Wi-Fi

Stay in one of the house's smartly presented rooms up an impressive sweeping staircase. Full of warm tones or coastal colours and comfy touches they're a great base for exploring the area. With 36 bedrooms, Nether Grange has plenty of space and there's a range of Good and Better Rooms to choose from.

All 'Good' rooms are ensuite and furnished to a high standard. There are also several 'Better' Rooms that are either larger or have a desirable view, a more luxurious mattress and larger television – upgrade your stay for just an extra £15-25 per person per night. You can choose a specific room for an extra £30 per room, subject to availability. Upgrade supplements still apply.

Facilities

Free Wi-Fi, boot room and drying room, extensive garden, multi-purpose activity room, lounges, library and board games to borrow

After a day walking on the coast, come back to the house and its specially tailored walkers' facilities. Relax by sitting in the elevated terrace gardens with a cooling drink and a cracking sea view or challenge a fellow guest to a game of croquet or giant chess, backed by views of the beach and sea beyond. The spick and span sky-blue painted bar with its mismatched blue and stripy seats boasts all the requisite cosiness and British bonhomie, plus a selection of local beers and your favourite tipple. Settle in.

Food & Drink

As at all our country houses, holidays are full board, from afternoon tea served as a welcome treat through that evening's meal to a hearty breakfast on the day of departure. Lunch is a chance to stock up on our famous picnic snacks. Food at Nether Grange is hearty and has a strong emphasis on ingredients from the area and seasonal produce. Once a week the light-filled dining room hosts a Local Food Night, when, over a sociable evening, you might try a five-course feast of local flavours.

Accessibility

For accessibility and assistance information, please contact our expert team on 020 3974 8865

TRAVEL DETAILS

Our address is: Nether Grange, Alnmouth, Alnwick, Northumberland NE66 2RZ
Tel: [01665 830431](tel:01665830431)

Nether Grange sits on a headland and only has access to limited roadside parking. We advise our guests to use rail travel where possible. Nether Grange is a 5-minute taxi ride from Alnmouth train station

By Train:

The nearest railway station is Alnmouth, on the main line between Newcastle and Edinburgh. For train times and route planning by train visit www.nationalrail.co.uk or phone 03457 48 49 50

By Taxi:

The 1½-mile journey from Alnmouth railway station takes approximately 5 minutes. You can pre-book a taxi from our recommended taxi company, Knight's Taxis. As a guide price, it cost £6 per 4-seat taxi in 2019. 8-seat taxis are also available at a higher rate. Please pre-book your taxi at least 7 days in advance by contacting:

Knight's Taxis*

Tel: +44 (0) 7760 751667

Email: info@knightstaxi.com

The return taxi journey can be arranged on your behalf by the Nether Grange Manager.

*Knight's Taxis is not owned or managed by HF Holidays

By Car:

Take the A1 to Alnwick. Exit on the A1068 heading towards Alnwick. At the roundabout turn right (not well signed) and follow the A1068 towards Alnmouth. After 2¾ miles go straight ahead at the first roundabout then left at the second roundabout onto the B1338. Cross a bridge as you approach Alnmouth, turning right at the next roundabout, then almost immediately left into The Wynd. Follow the one way system into Marine Road, passing the golf clubhouse on the left, and round into Northumberland Street. After 100yds turn right into the narrow Pease's Lane. Nether Grange is on the left. Please note that Nether Grange does not have a car park, there is very limited on-street parking available on a first come basis. You can park in available slots on Marine Road, Pease's Lane and elsewhere in town. There is a pay and display car park at the end of Marine Road.

Travelling From Overseas

The nearest airport is at Newcastle which is served by European flights, and UK regional flights from London. From here take the metro to Newcastle Central station, then on by train to Alnmouth - a straightforward journey taking just over 1 hour.

Manchester Airport has a much wider range of long-haul flights. There are trains every hour from the airport to Alnmouth with one change at Newcastle. Allow 3½ hours to Alnmouth - see www.nationalrail.co.uk for train times.

Flying to London Heathrow airport is another option, but has a longer onward train journey - allow 5 hours to reach Alnmouth. From Heathrow first take the Piccadilly line Underground train to London Kings Cross station. From here take a train to Alnmouth - see www.nationalrail.co.uk for train times.

Edinburgh Airport is also a possibility.

LOCAL AREA

Nether Grange sits right at the heart of the historic coastal village of Alnmouth. Located right on the North Sea coast there is a sweeping sandy beach and a small tidal harbour. Facilities include a handful of small shops, pubs and cafés.

A wider range of facilities, including shops, supermarkets, banks and chemists can be found in Alnwick, the nearest town. Alnwick is about four miles inland and is connected to Alnmouth by regular buses.

During your visit to the Nether Grange you may enjoy visiting the following places of interest:

Alnwick Castle & Gardens:

The huge Alnwick Castle is a big attraction in its own right and has gained a younger audience since being used as 'Hogwarts Castle' in the Harry Potter films. The gardens have undergone extensive rebuilding and are now the main draw for many visitors. Alnwick is just 10 to 15 minutes' drive from Alnmouth, and can also be reached using the hourly X18 bus. www.alnwickcastle.com or www.alnwickgarden.com

Bamburgh Castle

Owned by the Armstrong family since the 1750s, Bamburgh Castle occupies a splendid position above the sweeping sands of the North Sea coast. Bamburgh is 35 minutes' drive from Alnmouth, and can also be reached using the 501 local bus which runs every other hour. www.bamburghcastle.com

Farne Islands

Take a boat trip (weather permitting) from Seahouses to the Farne Islands; one of the best places in Britain to view seals and puffins. Seahouses is around 45 minutes' drive from Alnmouth, and can also be reached using the 501 bus. www.farne-islands.com

Lindisfarne

English Christianity was born in 7th century Northumberland and Lindisfarne Priory, is its oldest major site, dating from 635AD. It is located on the Holy Island of Lindisfarne, cut off by the tides twice a day (make sure that you check the tide times before you visit). The Heritage Centre tells the stories of St Aidan, St Cuthbert and St Bede and displays the 8th century Lindisfarne Gospels in electronic form. Linisfarne is just under an hour's drive from Alnmouth. www.english-heritage.org.uk/lindisfarne-priory

Warkworth Castle

Warkworth Castle, a few miles to the south of Alnmouth, towers over a bend in the River Coquet and the picturesque town of Warkworth. Warkworth is just 10 minutes' drive from Alnmouth, and can also be reached using the 518 bus. www.english-heritage.org.uk/warkworth-castle

Cragside House

Built by Victorian industrial magnate William Armstrong, Cragside House was hugely innovative and was the first house in Britain to be lit by electric light. Now managed by the National Trust, the house and gardens are a fascinating visit. Cragside is around 40 minutes' drive from Alnmouth. www.nationaltrust.org.uk/cragside

Seaton Delaval Hall

Seaton Delaval Hall is a fine stately home, designed by John Vambrugh and completed in 1728. Following an extensive fundraising appeal it has recently been purchased by the National Trust. The hall is around 40 minutes' drive from Alnmouth. www.nationaltrust.org.uk/seaton-delaval-hall

Newcastle-upon-Tyne

The vibrant city of Newcastle is always bustling with activity and is famed for its shopping and lively nightlife. The new Baltic arts centre and Sage Gallery are well worth a visit. Newcastle is just under an hour's drive from Alnmouth, and can also be reached by hourly local bus.

Hadrian's Wall

Around 1½ hours drive from Nether Grange, Hadrian's Wall remains a powerful symbol of the Roman Empire. The most dramatic section is from Once Brewed to Housteads Roman Fort and a walk here enables you to see some of the best preserved sections at close quarters. Two museums of note are the Roman Army Museum near Walltown you can gain an insight into the daily lives of Roman soldiers, and Vindolanda Roman Fort with its collection of rare Roman artefacts. www.visithadrianswall.co.uk

Edinburgh

Edinburgh is very accessible for a day trip. Catch the train from nearby Alnmouth station for the scenic 1 hour

journey to the Scottish capital. You'll arrive in the heart of the city centre with numerous museums, shops and galleries, plus the famous castle all within easy walking distance.

Alnmouth Village Golf Club

This links course is located right in front of Nether Grange. www.alnmouthvillagegolfclub.co.uk

Barter Books

Barter Books has been dubbed the British Library of secondhand bookshops and is located in a handsome old Victorian railway station in Alnwick.

Cragside House image © National Trust/Graeme Peacock, Seaton Delaval Hall image ©National Trust Images/John Hammond

USEFUL HOLIDAY INFORMATION

What To Bring

- Sketchpad
- Selection of pencils
- Pencil sharpener or craft knife
- Putty (kneadable) rubber
- A drawing board (if you prefer to use your own)
- Masking tape and masking fluid
- Large well rectangular palette
- Water pot (any good-sized plastic pot)
- Roll of kitchen towel
- Watercolour paints - A small set of student watercolours (tubes or pans), acrylics or pastels, according to your choice of medium, will be fine and then you can gradually build up your own selection as you become more experienced. Suggested colours: Cadmium Yellow, Winsor Yellow, Cadmium Red, Alizarin Crimson, Ultramarine blue, Cobalt blue, Indigo, Burnt Umber, Burnt Sienna, Dioxazine Violet, Raw Sienna, Winsor Blue, Phthalo Blue, Yellow Ochre
- Paper - Watercolour paper ("NOT" or rough surface) that's 140lbs or heavier. Size: bigger than A4 preferably on a block or separate sheets or in a pad. Guests should bring their own suitable paper to work on.
- Brushes - The most expensive you can afford. Sizes 4, 8 and 12 round will be sufficient. Sable/synthetic mix are fine
- Small rucksack or shoulder bag
- Wide-brimmed hat or a plastic eye shade will eliminate glare and improve your comfort
- Light folding chair/stool if you have one, alternatively a cushion, garden kneeler or plastic seat pad
- Remember sitting still can make you chillier than you would expect, so bring some extra layers of warm, wind-proof clothing and a thin pair of stretchy gloves
- Strong, comfortable footwear with a good tread

*A3 Drawing boards are available to borrow from the Country House

HOW TO BOOK

When you're ready to book, you can choose to **book online** or book **over the phone**. Our website offers secure online booking for our holidays, is available 24/7, and offers more in-depth information about all our holidays. If you prefer to call us, our experienced and knowledgeable team are available to answer any specific questions you have and can offer guidance as to which holiday is best suited to your needs.

Our office is open: Monday to Friday: 9am – 7pm Saturday: 9am – 1pm Sunday & Bank Holiday Monday: closed

PAYING YOUR DEPOSIT

To secure the holiday of your choice, you will need to pay a deposit: UK & European Holidays: £150 per person and Worldwide Holidays: £250 per person. You can pay your deposit by debit or credit card with no additional card fees charged or make an online BACS payment directly into HF's bank account, please see details under BACS payments. You can also pay your deposit by cheque within seven days of booking. Cheques should be made payable to 'HF Holidays Ltd' with your booking reference / Order ID on the back.

NON-MEMBER FEE

Non-members can join our holidays by paying a Non-Member's fee of £20 per person per holiday. Alternatively, full membership is available from £100 – visit hfholidays.co.uk/membership for details.

BACS PAYMENTS

Please quote your booking reference / Order ID when you make your payment online: Bank Name: Svenska Handelsbanken AB (publ) Account Name: HF Holidays Ltd Account Number: 35923304 Sort Code: 40-51-62 IBAN: GB92HAND40516235923304 Swift / Bic Code: HANDGB22

Once we have received your booking and deposit, we will send a confirmation invoice to the lead name. Please check this carefully. For bookings 'with flights' it is essential that the names on your booking confirmation invoice match those on your passport for bookings overseas. Please advise us immediately of any errors. Any name changes after the balance of your holiday has been paid will be subject to a fee levied by the airline.

MANAGE MY BOOKINGS

Payments can also be made through the Manage My Booking function on our website. Click on the link at the top of our homepage. This is available to all customers who provide an email address at the time of booking.

YOUR FINAL BALANCE

The balance is due 10 weeks before departure. As with paying your deposit, you can pay your final balance by debit or credit card, make an online BACS payment directly into HF's bank account or pay by cheque.

TRAVEL INSURANCE

Travel insurance is an important part of any booking and essential for one of our holidays. HF Holidays works with specialist. Insurance Brokers Campbell Irvine Direct. For more information or to obtain a quote call them on 01702 427 236 or visit hfholidays.co.uk/insurance

PEACE OF MIND

ATOL:

The air holidays and flights in this brochure are ATOL-protected, since we hold an Air Travel Organiser's Licence granted by the Civil Aviation Authority. Our ATOL number is ATOL 710. In the unlikely event of our insolvency, the CAA will ensure that you are not stranded abroad and will arrange to refund any money you have paid us for advance bookings. For further information visit the ATOL website atol.org.uk

MEMBER OF ABTOT:

HF Holidays is a member of ABTOT (The Association of Bonded Travel Organisers Trust Limited) which provides financial protection under the Package Travel, Package Holidays and Package Tours Regulations 1992 for HF Holidays Ltd and in the event of their insolvency, protection is provided for the following: 1. non-flight packages commencing in and returning to the UK; 2. non-flight packages commencing and returning to a country other than the UK; 3. flight inclusive packages that commence outside of the UK and Republic of Ireland, which are sold to customers outside of the UK and Republic of Ireland. 1, 2 and 3 provides for a refund in the event you

have not yet travelled. 1 and 3 provides for repatriation. Please note that bookings made outside the UK and Republic of Ireland are only protected by ABTOT when purchased directly with HF Holidays Ltd.

TRIP NOTE VALIDITY

These Trip Notes are valid based on the date printed at the bottom of the page. They will occasionally be updated post booking and pre-departure. We will send you the latest trip notes prior to departure through a link in your pre departure documents or we can send you a copy in the post if preferred.

In booking this trip you should be confident in your ability to participate in all activities described in these Trip Notes. If you have any doubt about your suitability you should call HF Holidays and ask to speak to one of the team about this itinerary.

The information in these Trip Notes is given in good faith. Where differences exist between the Trip Notes and our current brochure, the Trip Notes supersede the brochure. All holidays can be subject to unexpected changes; so please be prepared to be flexible where necessary. At times, it may not be possible to follow the itinerary as planned due to weather conditions, political, physical or other factors. In these circumstances we will make the best possible alternative arrangements to maintain the integrity of the original itinerary.

PRICE GUARANTEE

We promise that our earliest published prices will always be the best and if we reduce our holiday price after your booking has been confirmed, we will pass this reduction on to you. Our price promise applies if any subsequent offer price is for an identical holiday, duration, location and date and does not cover any optional extras, flights or additional services.

Document produced: 29-10-2020

